



全球设施农业种植系统创新引领者

Global Growing System Innovator

# ABOUT US



Changzhou Changshen Horticultural Technology Co., Ltd.

A global provider of protected agricultural planting system solutions, focusing on integrated design, production and construction. It centers on efficient planting systems + intelligent equipment to cut costs and boost efficiency for modern agriculture.

Its main offerings cover steel supports, planting troughs (for solanaceous fruits, cut flowers), aerial strawberry systems, multi-layer blueberry planting systems, and self-developed intelligent equipment like trough forming machines. It serves greenhouse and vertical farm scenarios with durable, space-saving services.

Strategic Positioning: Global Innovation Leader in Protected Agricultural Planting Systems  
Core Values: Innovation-driven, Customer-centric, Sustainable Development, Professional Integrity, Win-win Cooperation



# ABOUT US





# 目录

- 01** *Professional equipment R&D*
- 02** *Patented coating*
- 03** *Growing system set*
- 04** *Plastic products*
- 05** *Pipe railway support*
- 06** *Wire production*
- 07** *Growing system accessory*
- 08** *Seedbed system*
- 09** *Project Case Display*

# 专业设备研发

PROFESSIONAL EQUIPMENT RESEARCH AND DEVELOPMENT



We manufacture specialized planter production equipment with the following features:

- Compact, lightweight design (max. 4m length, 2m width).
- Upgraded servo-driven power units for higher precision, energy efficiency, and a low-carbon footprint.
- Capable of producing over 13,000 linear meters per day, operating 24/7.
- Advanced electronic control and hydraulic systems for full maneuverability in extreme climates.
- Proprietary human-machine interface with global positioning, yield feedback, and multi-language support for worldwide deployment.



# 成套种植系统——茄果类（吊挂番茄）

GROWING SYSTEM SET

---



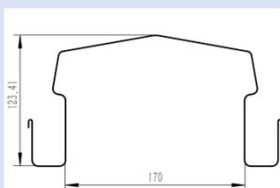
## Hanging Tomato Cultivation System Overview

The hanging tomato tray system is an efficient soilless cultivation method. By suspending trays from the greenhouse frame, roots are kept off the ground, reducing surface temperature effects and maintaining optimal root conditions for crop growth.



## Introduction to the Trough Body

---



### 600A growing trough

Recommended for growing tomatoes, strawberries, blueberries, peppers, and cucumbers

# 成套种植系统——茄果类（支架番茄）

GROWING SYSTEM SET

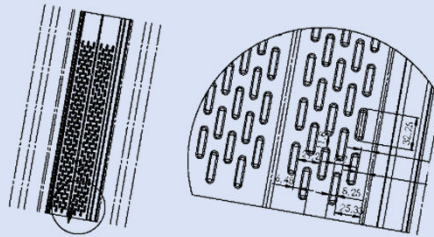
## Overview of Staked Tomato Gutter System

The bracket tomato cultivation tray system is an efficient method with a hanging zigzag tray design, made from durable 0.7mm polyester-coated panels. Trays can be adjusted in height to suit crop needs, improving the work environment and labor efficiency.

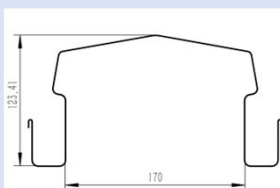


## Staking and Vine Tying for Staked Tomatoes

Tomato staking is typically done when seedlings reach about 30 cm in height, after tilling and weeding. Stakes should be placed 7–10 cm from the plant to prevent root damage. Tie the stems to the stakes every 20–30 cm of growth, typically 4–5 times.



## Introduction to the Trough Body



600A growing trough  
Recommended for growing tomatoes, strawberries, blueberries, peppers, and cucumbers

# 成套种植系统——茄果类（地面式）

GROWING SYSTEM SET

---



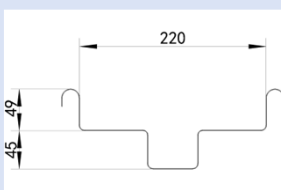
## Key Advantages of Field-Grown Solanaceous Crops

- Low cost: No support structure (vs. elevated beds), easy to install.
- Solves continuous cropping issues: Eliminates soil-borne diseases, nematodes, salinization.
- Precise water/fertilizer management: High utilization rate, resource-saving.
- Good growth environment: Loose, breathable substrate; developed roots, robust plants, fewer diseases.
- High yield & quality: Optimal conditions for tomatoes, uniform fruit quality.
- Easy operation: Suitable height, reduced labor intensity.



## Introduction to the Trough Body

---



400C growing trough  
Recommended for growing cut flowers, herbs, raspberries, cucumbers, and blueberries

# 成套种植系统——浆果类（悬挂式）

GROWING SYSTEM SET

## Zonal Lifting

Aerial strawberry system: New tech for 3D, soilless cultivation. Boosts yield/quality, cuts labor intensity, and improves picking experience via smart management.

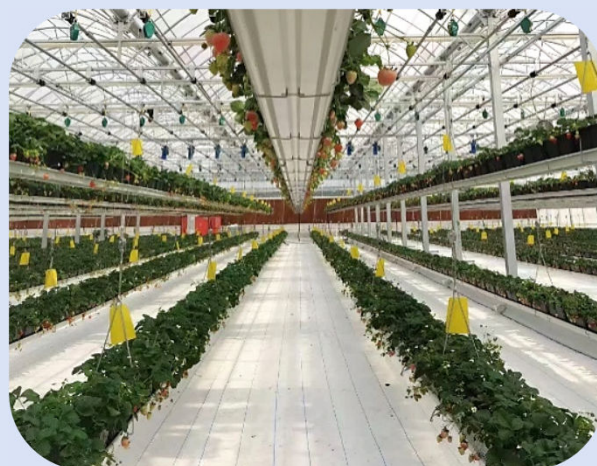


## Horizontal Suspension

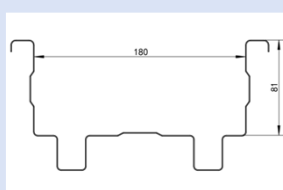
3D cultivation: Aerial strawberries use troughs, suspending for space and density. Intelligent management: Motor control enables trough movement for easy care.

## Individual Lifting

Higher yield: Aerial 3D cultivation boosts per-mu yield 3x vs. ground planting. Better quality: Precise control makes appearance and taste different.



Introduction to the Trough Body



485A growing trough

Recommended for growing tomatoes, strawberries, herbs, and raspberries

# 成套种植系统——浆果类（支架式）

GROWING SYSTEM SET

---



### Single-Row Strawberries

High-strength metals like steel or aluminum alloy are typically used for their load-bearing capacity and corrosion resistance.



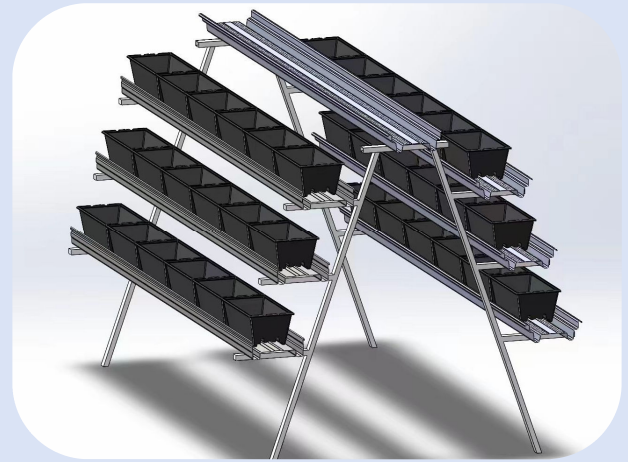
### Triangular-Arranged Strawberries

Triangular trellis firmly supports growing troughs, stabilizing strawberries and tomatoes in greenhouses.



### Double-Row Strawberries

Double-row support frames pair upright posts with crossbars, reinforcing long cultivation channels.

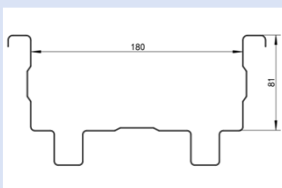


### A-Frame Strawberries

A-frame towers maximize vertical space, enhance crop lighting, simplify picking, and allow scheduled substrate renewal.

Introduction to the Trough Body

---



485A growing trough  
Recommended for growing tomatoes, strawberries, herbs, and raspberries

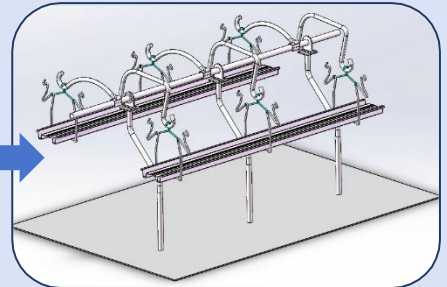
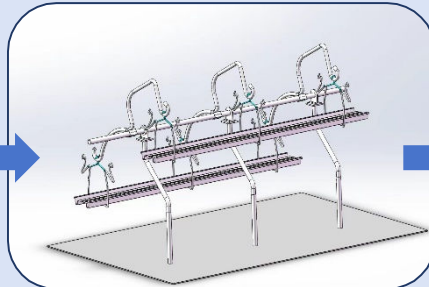
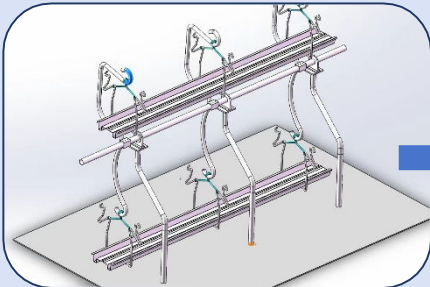
# 成套种植系统——浆果类（旋转式）

GROWING SYSTEM SET



## Advantages of Rotating Strawberry Systems

Rotating strawberry planting trough system: vertical cultivation for layered space, ensuring ample light, robust growth, uniform fruit coloring, and >93% marketable rate. Strawberries hang outside troughs for neat look, easy picking (ideal for agritourism), and >30% higher yield than horizontal planting.



## Patent application



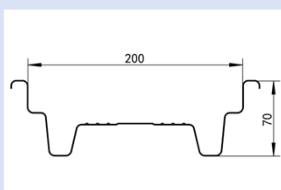
申请号或专利号：202422934857.2

发文序号：2025091000101650

申请人或专利权人：常州常森园艺科技有限公司

发明创造名称：一种旋转升降式草莓种植架

## Introduction to the Trough Body



400B growing trough

Recommended for growing cut flowers, herbs, raspberries, cucumbers, and blueberries

# 成套种植系统——双排切花

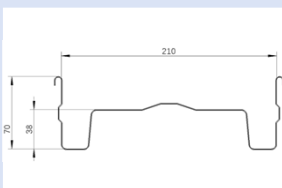
## GROWING SYSTEM SET



### Double-Row Gutter System for Cut Flower Cultivation

This system consists of support troughs, drainage troughs, and full-length bottom plate support structures. The support troughs are pressed from custom fingerprint-resistant 150g aluminum-zinc coated sheets, with a thickness of 0.8mm, a hole diameter of 176mm, and 5 holes per meter. The drainage troughs are pressed from high-weather-resistance polyester-coated sheets, with a thickness of 0.7mm, and can be produced continuously on-site. The full-length bottom plate structure design ensures the stability of the overall structure.

#### Introduction to the Trough Body



440A growing trough  
Recommended for growing tomatoes, strawberries, cucumbers, cut flowers, raspberries, and herbs

# 成套种植系统——双排切花

## GROWING SYSTEM SET



### Characteristics of Cut Flower Cultivation Techniques

High yield per unit area & great profit: e.g., annual output of roses 100–150 stems/m<sup>2</sup>, chrysanthemums 60–80 stems/m<sup>2</sup>.

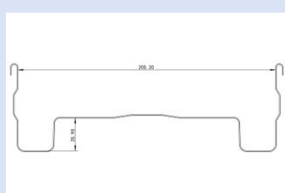
Large-scale cultivation: standardized techniques, controlled facilities, intensive harvesting/sales, fast cycles, year-round supply.

Huge cut flower consumption & broad market.

High investment/risk in cut flower cultivation, but high economic benefits.



Introduction to the Trough Body

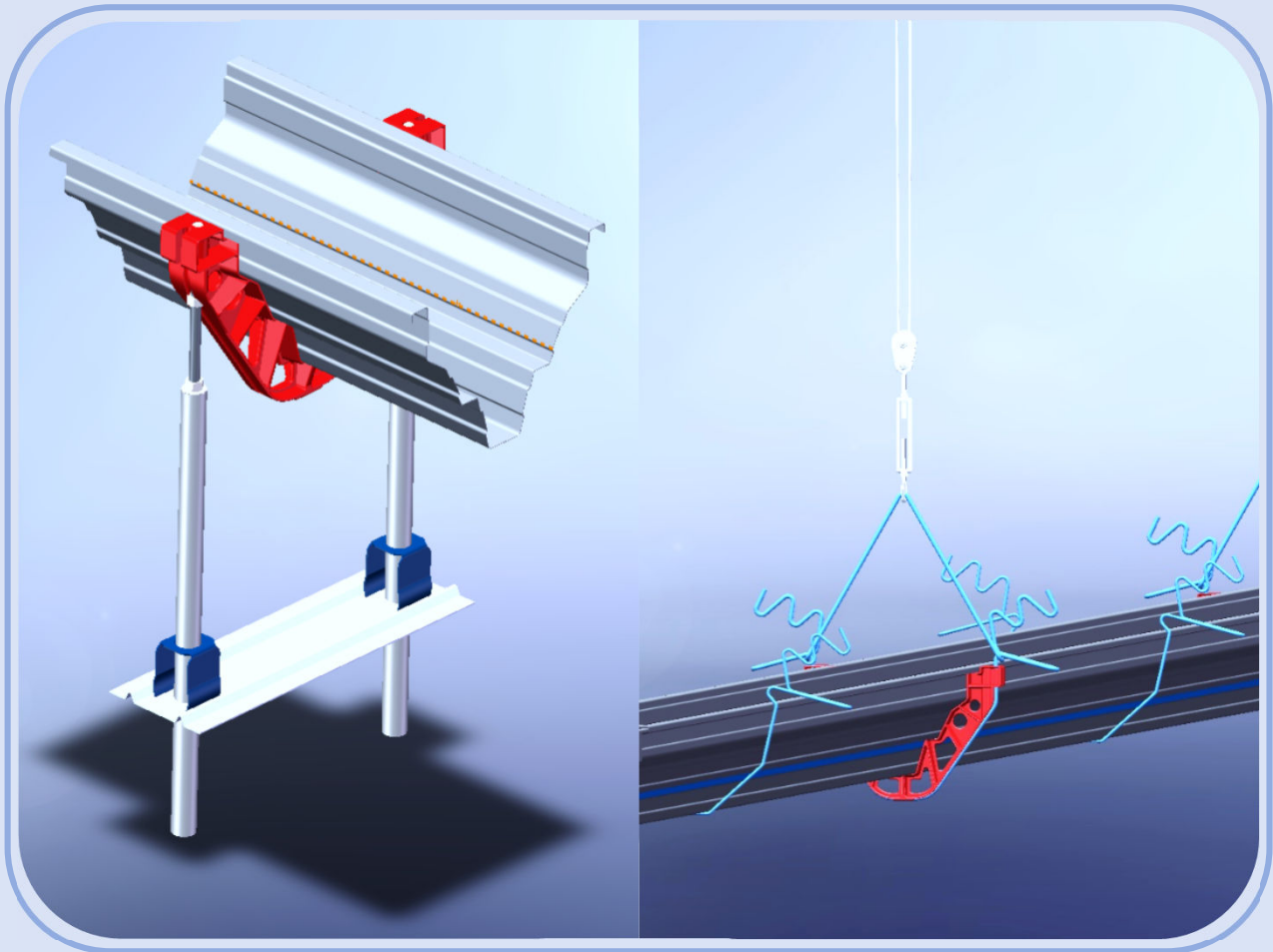


400A growing trough

Recommended for growing cut flowers, herbs, raspberries, cucumbers, and blueberries

# 成套种植系统——V型槽

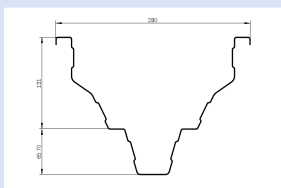
GROWING SYSTEM SET



## New Model Recommendations

V-shaped troughs: unique, innovative design, fit for various crops' growth habits.  
Supporting facilities: complete, multi-functional (height-adjustable, stand-mountable, hangable) for quick usage switching.  
Suspended troughs: fast installation per greenhouse structure, shorter construction time, lower labor costs.  
Rotating strawberry troughs: regulate root temperature, create better crop growth environment.

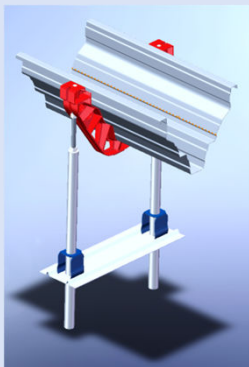
### Introduction to the Trough Body



600B growing trough  
Recommended for growing tomatoes and strawberries

# 成套种植系统——V型槽

GROWING SYSTEM SET



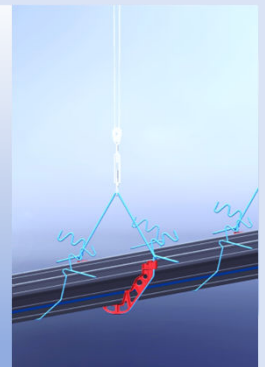
## New Model Recommendations

V-shaped troughs: unique, innovative design, fit for various crops' growth habits.

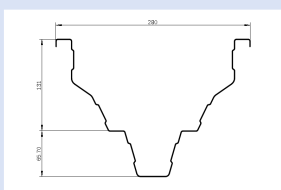
Supporting facilities: complete, multi-functional (height-adjustable, stand-mountable, hangable) for quick usage switching.

Suspended troughs: fast installation per greenhouse structure, shorter construction time, lower labor costs.

Rotating strawberry troughs: regulate root temperature, create better crop growth environment.



Introduction to the Trough Body



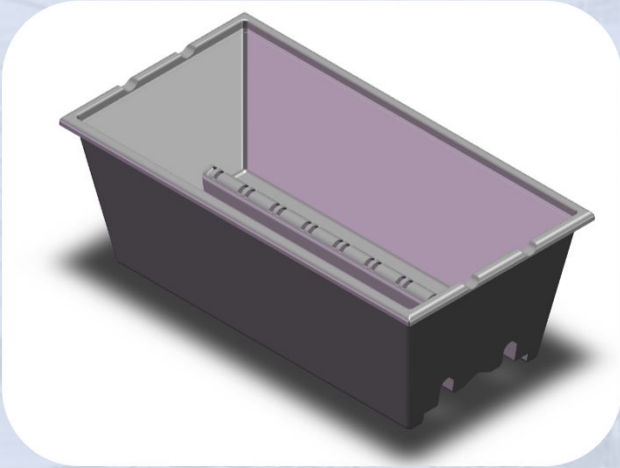
600B growing trough

Recommended for growing tomatoes and strawberries

# 塑料产品——种植容器

PLASTIC PRODUCTS

---



## Product Features

Soil control: Tailored soil formulas (pH level, fertility, drainage) for different plants, not limited by garden soil conditions.

Root environment: In cold areas, move cold-sensitive plants (with pots) indoors for winter; in hot summers, relocate to shaded areas to avoid sunscald.

Seasonal adjustment: Sun-loving plants can follow sunlight; shade-loving plants can be moved to shade in summer.



# 塑料产品——滴灌管和毛细管

PLASTIC PRODUCTS



## Anti-Clogging Precision Dripper Technology

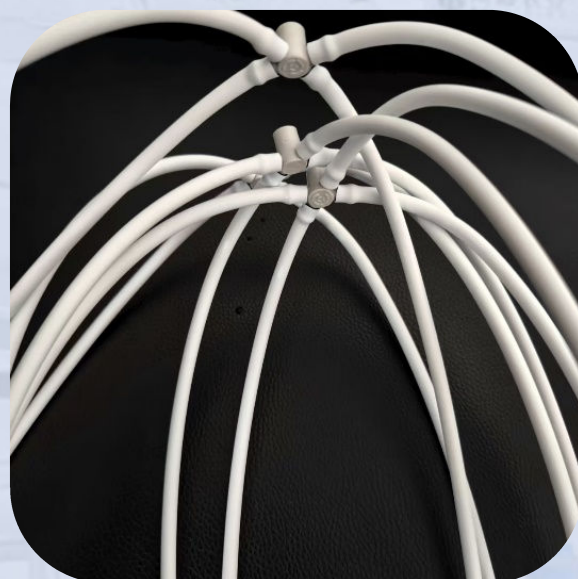
The drip irrigation tube uses a labyrinth flow channel + wide-flow dripper design. Dripper hole diameter is 0.8mm (traditional: 0.5mm), with a built-in 80-mesh filter to prevent sediment clogging (clogging rate <math><1\%</math>).

It also has >95% water output uniformity, stable hourly flow of 1.5-2L (adjustable by crop needs), ensuring equal water/fertilizer for each plant and avoiding uneven growth.

## High-Flexibility Pipe Craftsmanship

Drip irrigation tubes: PE material with anti-aging/anti-UV agents, 12MPa tensile strength,  $\geq 300\%$  elongation at break, temperature resistance (-10°C to 60°C).

Service life: 5-7 years in greenhouse (vs. 2-3 years for traditional ones).



# 塑料产品——作物根部通风方案

PLASTIC PRODUCTS

## Ventilation Structure Design

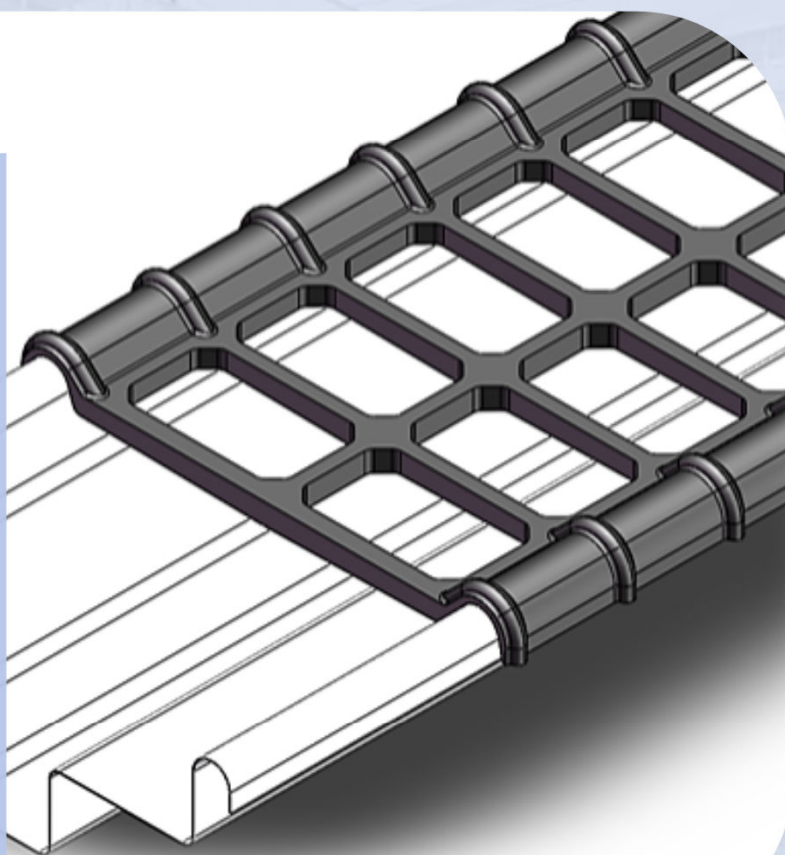
Layered ventilation structure: Double channels at trough bottom & middle (based on cut flower trough depth and root distribution).

Bottom channel: Smooth anti-corrosion material for quick excess water drainage, preventing root soaking.

## Comparative Tests

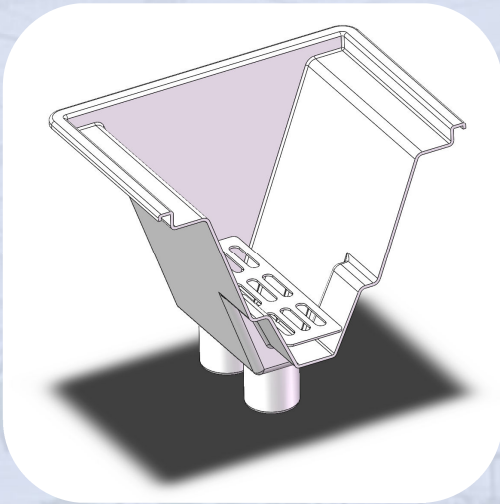
High-quality PP + color-coated trough: water-fertilizer/acid-alkali/corrosion-resistant, 3–5 years longer life than ordinary products, cutting long-term costs.

With ventilation: sufficient oxygen boosts root vitality, improves flower quality, and enhances nutrient absorption. Tests: lilies have 10–15cm longer stems, 2–3 days longer vase life, 15%–20% market price premium.



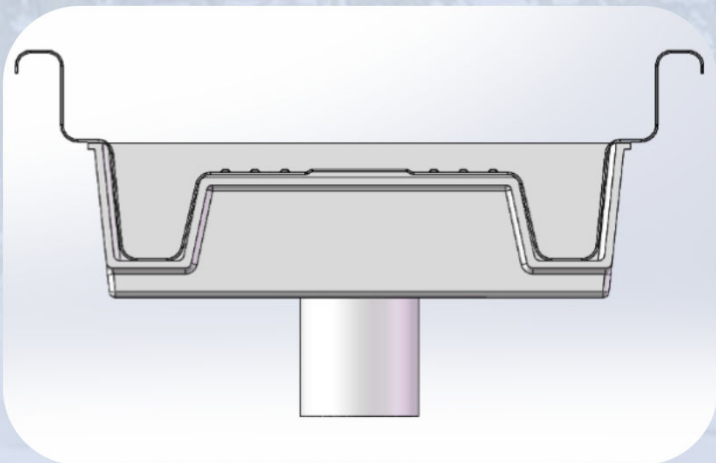
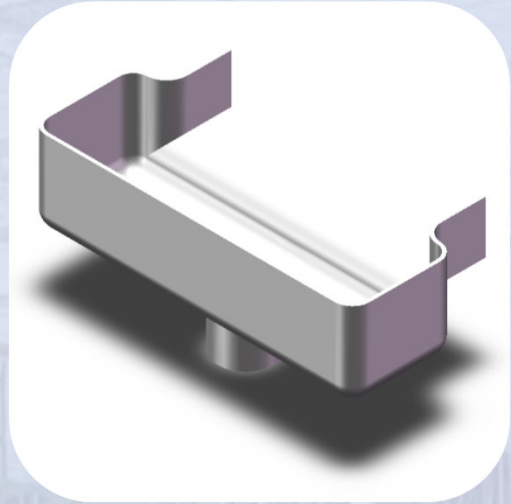
# 塑料产品——下水头与堵头

## PLASTIC PRODUCTS



### Product Concept

Part of the drainage system, installed at the trough end. It drains excess water to prevent root rot and recycles water for reuse, cutting costs.



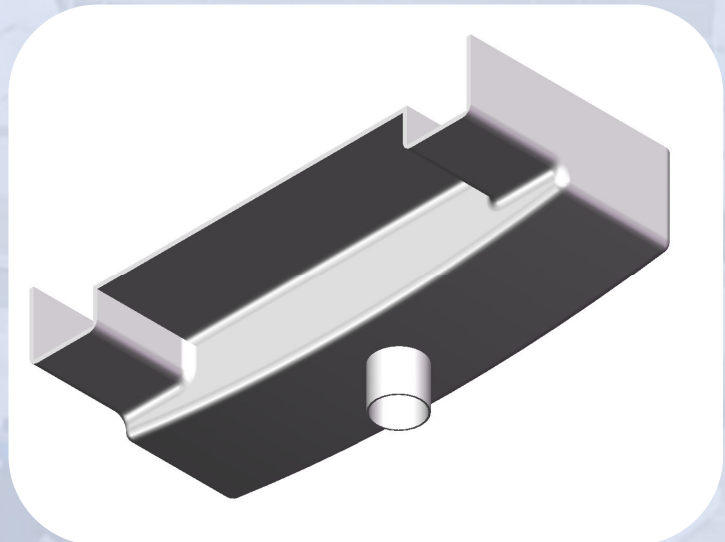
### Material & Appearance

Material: Mainly PVC, ABS plastic or stainless steel, featuring corrosion resistance and durability.

Appearance: Smooth surface and simple design of the drain fitting, matching the overall look of the cultivation trough.

### Product Features

- Custom design: Multiple shapes, perfect for troughs.
- Efficient drainage: Special channels, fast draining.
- Quality material: PVC/ABS/stainless steel, durable, corrosion-resistant.
- Easy installation: Simple design, easy to fit.



# 暖通与支架——种植支架

## PIPE RAILWAY SUPPORT



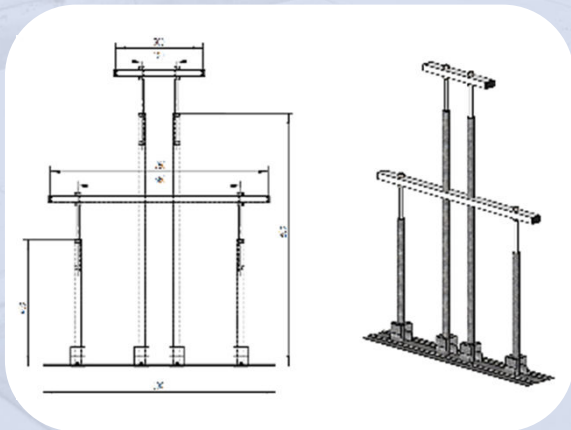
### Double-Row Support Frame

The double-row rack is a common support structure in cultivation troughs. It holds two planting troughs simultaneously on one rack, improving space utilization.



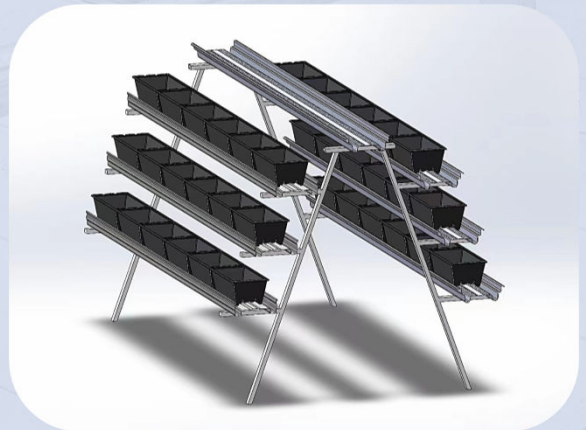
### Single-Row Support Frame

Single-row standard rack: common in rack-type planting systems, 1 rack for 1 trough, adjustable/customizable height, fits various trough types & terrains.



### Triangular-Arranged Support Frame

In greenhouses, triangular-arrangement racks are mostly used for high-stability crops (strawberries, tomatoes, etc.), effectively supporting cultivation troughs to keep them stable.

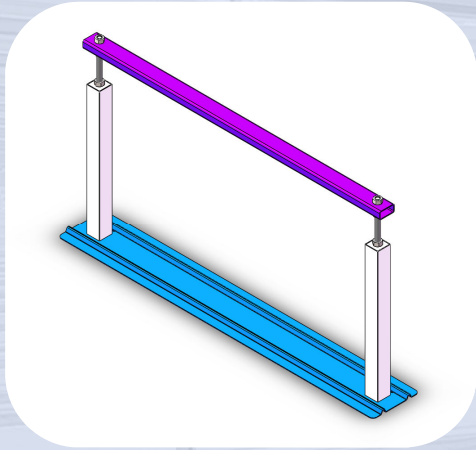


### A-Frame Support Frame

A-frame soilless cultivation rack: has support frame, fixed cultivation troughs and a water supply device. open water supply; space-saving A-design.

# 暖通与支架——种植支架

## PIPE RAILWAY SUPPORT



### Square Tube Non-Buried Bracket

Simple structure, quick installation, easy disassembly and storage.

The square tube column legs of the bracket ensure better stability.

Height can be adjusted by up to 20cm on-site, and width can be customized to customer needs.



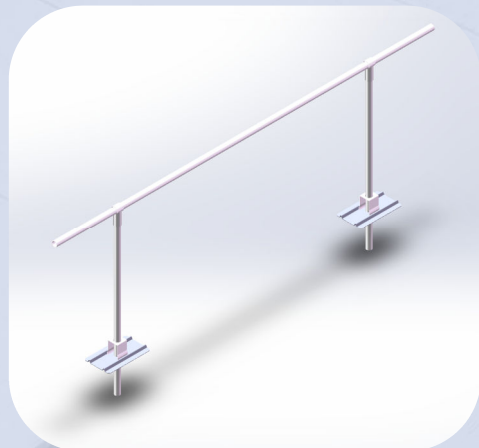
### Round Tube Beam Hydroponic Bracket

Hydroponic brackets (for hydroponic troughs) have adjustable floor heights.

Height is adjusted via the burial depth of round tubes.

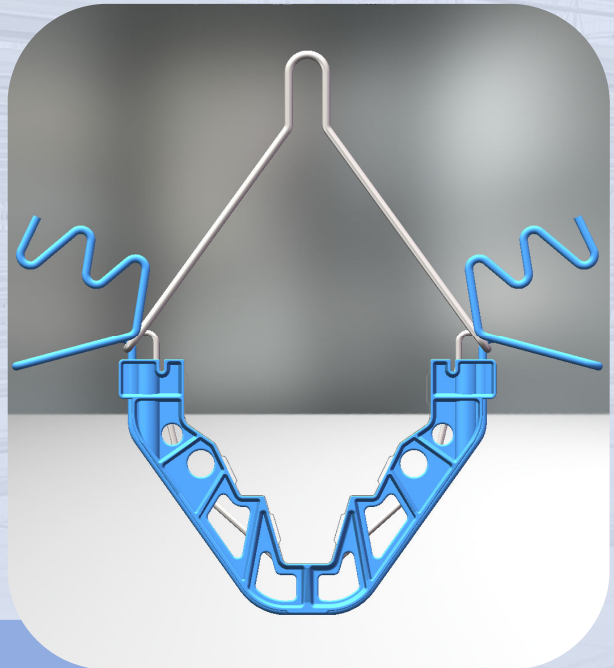
Round tube brackets are safe (no hand cuts), preventing construction injuries.

Fewer parts and lower costs.



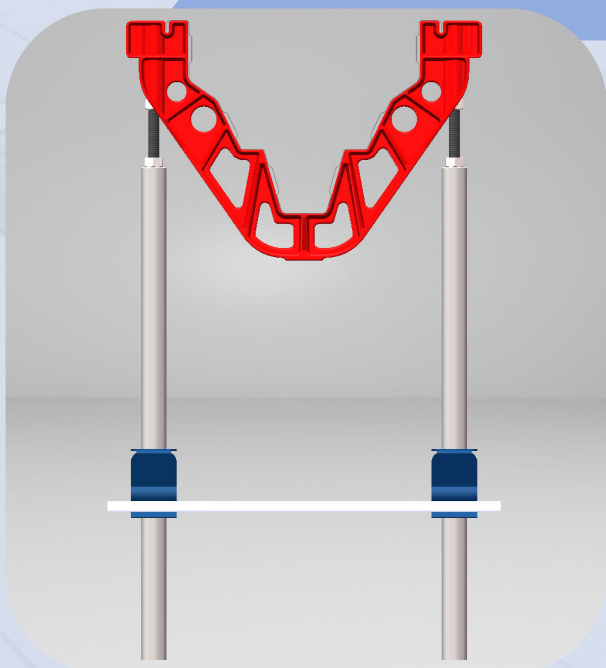
# 暖通与支架——种植支架

PIPE RAILWAY SUPPORT



## V-Shaped Black Hanging Support Bracket

High-strength black injection molding ensures stable structure and light weight.  
Fits both planting trough hanging and bracket needs; paired with metal screw assemblies for easy installation and reliable load-bearing.  
Provides efficient support for planting systems, creating an organized growing space.



# 暖通与支架——轨道车支架

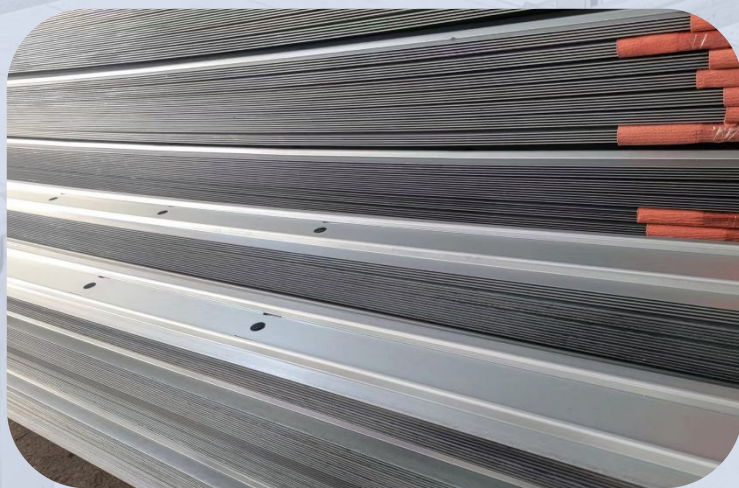
PIPE RAILWAY SUPPORT

---



## Single-Row Rail Support Frame

Track supports are typically made of high-strength steel to ensure load-bearing capacity and durability. They are widely used in greenhouses requiring automated equipment movement, such as track systems for supporting picking vehicles, which helps improve picking efficiency.



## Full-Length Rail Support Frame

Support main body: Q235 low-carbon steel, hot-dip galvanized (anti-corrosion). High-strength load-bearing: bending strength 210MPa, compressive strength 345MPa.

Widened anti-slip base: +60% ground contact area, disperses pressure, ensures stable heavy-load operation of rail cars.

Rail slot diameter: customizable (usual 50mm), compatible with over 90% of market greenhouse rail cars.

# 暖通与支架——其他配件

PIPE RAILWAY SUPPORT



## Rail-Mounted Heating Pipe

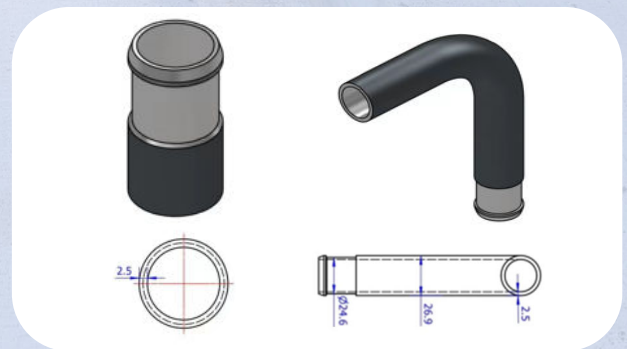
Track Heating Pipes double as work vehicle rails, boosting greenhouse operational efficiency. They supply stable heat via circulating hot water or air within the pipes. Their large heat dissipation area and distance from plants allow higher pipe temperatures, effectively warming the greenhouse.

## Rail-Mounted Flexible Pipe

**Flexibility:** The hose connector design gives the piping system high flexibility, allowing adjustments to fit the specific greenhouse layout.

**Good Sealing Performance:** High-quality hose connectors offer excellent sealing, preventing leakage of thermal media.

**Easy Installation & Maintenance:** The installation process is simple and fast, and they are easy to disassemble and replace during maintenance.



## Rail Cart Elbow

Track elbows are part of the rail system for picking vehicles, boosting harvesting efficiency.

They connect straight rail sections to form curved paths, adapting to different greenhouse layouts and equipment movement needs.

Made of the same material as heating pipes, they ensure consistent overall strength.

Their sizes can be customized to meet specific equipment requirements.



# 暖通与支架——暖气吊环

PIPE RAILWAY SUPPORT

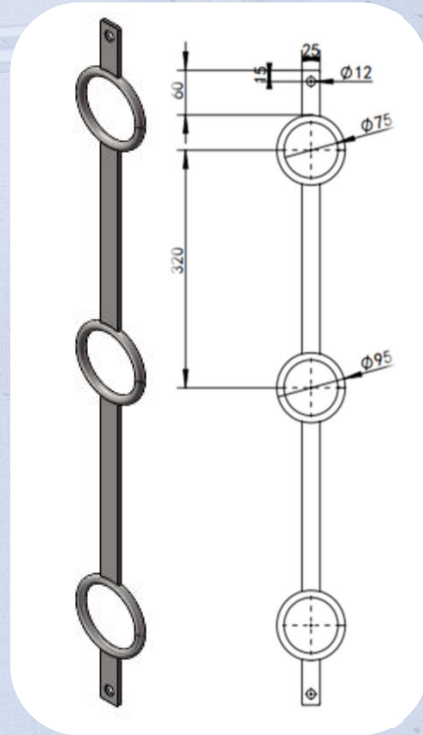
## Core Advantages

**Easy installation:** Features simple mounting mechanisms for quick setup and adjustment.

**Strong load capacity:** Supports the weight of heating equipment and pipes for safety and stability.

**Durability:** Made of corrosion-resistant materials (e.g., galvanized steel, stainless steel) to adapt to various environments and extend service life.

**Aesthetics:** Sleek design blends with interior decor without compromising visual appeal.



## Product Features

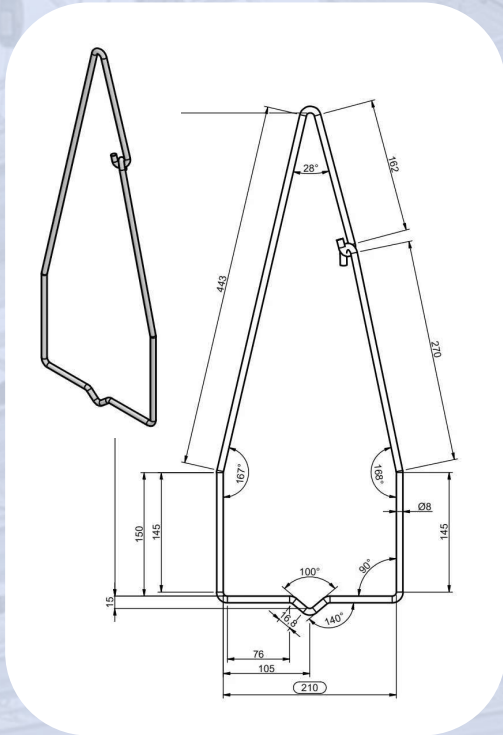
**Material:** Usually steel, stainless steel or aluminum alloy; surface may have galvanization, painting or powder coating for enhanced corrosion resistance.

**Strength:** Sufficient to support the weight of heating equipment and its pipes.

**Adjustability:** Some designs allow a certain degree of height adjustment to meet different installation needs.

# 挂钩与线成型

## WIRE PRODUCTION



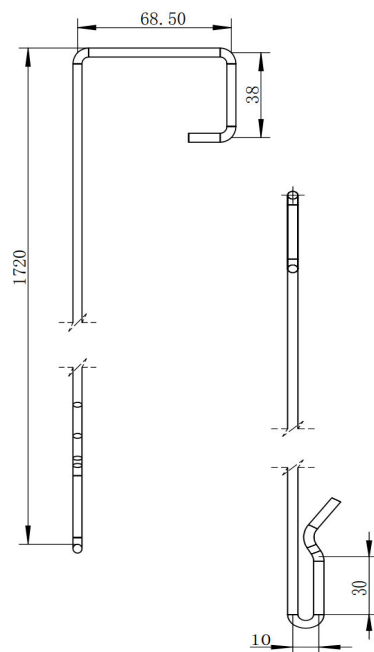
### Substrate Trough Hook

Vs similar products: 8mm closed hook (special design/material) offers more safety margin, longer life – safer, stabler for trough suspension.



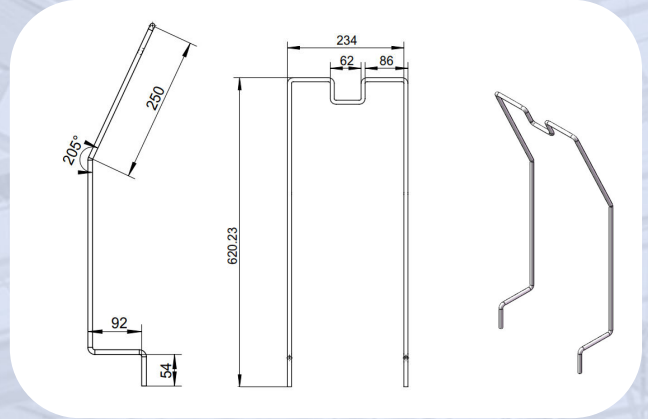
### Wire Hook

This hook is typically made of 5mm-diameter steel wire, with adjustable and lockable functions for easy length adjustment as needed.



# 挂钩与线成型

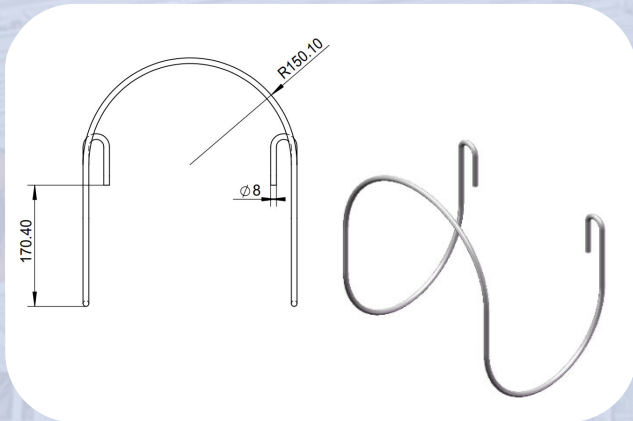
## WIRE PRODUCTION



### Vine Training Upwards

Main use: Guide crop vines to supports above greenhouse cultivation troughs, enabling vertical growth and full use of space and light resources.

Made with high-strength nylon rope or PP vine-hanging line, plus professional hanging ring design, for easy upward vine guidance. Material benefits: Anti-aging, corrosion-resistant, long service life, high durability.



### Vine Training Downwards

Higher yield & quality: Old vine coiling and lowering effectively optimizes the growth environment for upper new vines, boosting crop yield and fruit quality.

Lower costs: Low-cost and easy to use, it's a necessity for the growth of non-climbing vine crops.

Long-term use: Long service life, aligning with green planting concepts.



# 特殊配件——硫磺熏蒸器

SPECIAL PRODUCTION



## Product Features

Efficient sterilization/insect control:  
Fast plant coverage, complete pest/pathogen elimination.  
Eco-safe: Natural sulfur fungicide, no harmful chemical residues.  
Easy use: Ignite sulfur, adjust smoke volume & duration.

## Technical Parameters

Multiple heating options: Fast heating for quick pest repellent effect.  
Wide coverage: Covers approx. 90 sqm.  
Various tank lengths/colors: Fits different greenhouse heights, spaces and terrains.

Main Diseases to control and time of operation		
Disease/Time	Contamination	Operation time (hours)
Powdery Mildew/8h	High	Roses Strawberries/Pepper – sensitive
Powdery Mildew/4h	Low	Tomatoes Pepper
Natural enemies/4h	----	Persimillis - to control spider mites Orius - to control trips
Heating logic	Voltage	Watt
PTC	220V/230V	65/100/500 (Instant)
FIR	220V/230V	100/160/420 (Instant)
Resistance wires	220V/230V	120/260 (Instant)
Graphene	220V/230V	

# 特殊配件——风筒泄压阀

SPECIAL PRODUCTION

---



## Product Features

Set pressure: 1.1-1.2x fan's rated pressure.

Discharge capacity: Match fan displacement for quick overpressure relief.

Material selection: Valve/seal materials based on medium properties (temp, corrosiveness).

Connection: Match pipe ports (common: flange/threaded); ensure tight seal.

## Maintenance Key Points

Regular inspection: Visual check (no leakage/rust/deformation) & functional test (manual disc opening/closing).

Calibration: Set pressure  $\geq 1x$ /year; slow pressurization to avoid damage.

Cleaning/maintenance: Keep valve clean (no impurities affecting seal); check spring, replace if needed.

Records: Maintain files with calibration date, pressure & maintenance details.



# 特殊配件——绕线筒、轴承座与动滑轮

SPECIAL PRODUCTION

## Wire Winding Drum

Specialized for greenhouse industry, ideal for cultivation troughs. Enables multiple functions: enhanced trough processing performance, acid/alkali oxidation resistance, anti-condensation & anti-fouling. Usual rope length: ~8m, suitable for most greenhouses.



3000-cycle abrasion test ←



## Bearing Housing

Internal self-aligning bearings: Adjust to on-site changes in various greenhouse environments to handle deviations or emergencies.

Bearing housing: Key component for supporting/fixing bearings in machinery; ensures precise, stable operation of shafts and upper transmission parts.

## Movable Pulley

Movable pulley system: Labor-saving design reduces drive unit size, shares bearing housings, cuts independent bearing count and lowers costs.

Initial height locked by limit components (ensures product consistency); precise adjustment via rotating adjustment components during use.



# 苗床产品

## SEEDLING TRAY PRODUCTS



Flow Bench

### Concept Introduction of Ebb and Flow Bench

Tidal seedbed: A seedling system simulating natural tides. Periodic filling/drainage of nutrient solution lets roots absorb required nutrients.

### Composition of Ebb and Flow Bench

Tidal tray: ABS material, high corrosion resistance, good load-bearing capacity.  
Rolling shafts & brackets: For moving and fixing the seedbed.  
Handwheels, cross supports & diagonal rods: For adjusting and stabilizing the seedbed.



Mobile Bench

### Concept Introduction of Mobile Bench

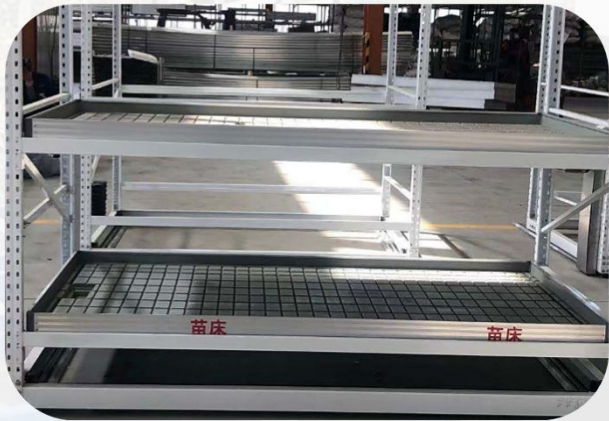
Mobile seedbed: Seedlings (flower/veg/rice/herb), saves land, boosts yield.  
Mobile seedbed: Protected agri, seedlings, saves land, improves yield.

### Characteristics of Mobile Bench

Aluminum alloy frame:  
Corrosion-resistant, aesthetic  
High utilization: 0.6m operation aisle, ~80% greenhouse utilization  
Hot-dip galvanizing: Main frame + seedbed net, suitable for humid environments.

# 苗床产品

## SEEDLING TRAY PRODUCTS



### Characteristics of Rail-Mounted Bench

Water-saving & uniform irrigation: 30%-70% saving vs. traditional overhead, uniform plant water supply.

Reduced disease spread: Bottom supply keeps leaves dry, lower risk from moist leaves.



### Concept Introduction of 3D Rotating Bench

Vertical rotating seedbed is an application of modern agricultural technology. It combines vertical cultivation and automated rotation technology to improve crop growth efficiency and space utilization.

# 苗床产品——全自动物流苗床

## SEEDLING TRAY PRODUCTS

### Composition Structure

#### Drive System

Core power unit.

Common drives:

pneumatic & electric,  
controlled by  
computer/automation  
system.

#### Chassis & Irrigation System

Seedbed bottom has  
chassis (supports  
seedlings). Chassis  
material: UV-resistant,  
anti-aging, high-  
impact polystyrene or  
ABS.



### Technical Parameters

Seedbed Size 1.8m x  
5.75m, movable  
horizontally on  
seedbed rails.

Load Capacity & Rail  
Material High load  
capacity:

~70kg/m<sup>2</sup> Rail  
material: Necked hot-  
dip galvanized steel  
pipe (Φ51 x 2.25mm)

Moving Speed

Customizable based  
on actual application  
scenarios and needs.

# 苗床产品——全自动灌溉设备

## SEEDLING TRAY PRODUCTS



### Working Principle

Tidal irrigation: Periodically floods beds; nutrient solution rises to substrate surface via capillary action, then drains for recycling.

Nutrient solution ratio: Auto-adjusts per plant needs/test results for balanced nutrition.

Automatic control: Real-time seedling growth monitoring & data analysis via computer image processing + sensor tech.

### Technical Characteristics

Water & fertilizer saving: Precise control of irrigation volume and nutrient ratio reduces waste.

High automation: Less manual operation, lower labor intensity, higher production efficiency.

Flexibility & modularity: Expandable for future changes.

Environmental adaptability: Fits climates/soils, stabilizes growth.





Greenhouse Area We Participated in Constructing **2500000** m<sup>2</sup>+

# 大型项目展示

Major Project Exhibition





**常森园艺**  
CHANSCEN

## 案例展示

CASE SHOW



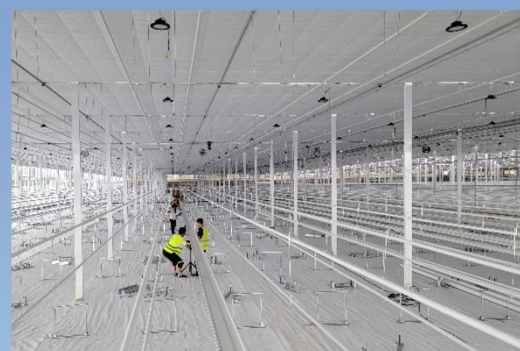
**Strawberry Planting Systems,**  
Fuping/Shanxi, Oct 2025



**Double-row Cut Flowers,**  
Yinchuan/Ningxia, Jun 2025



**Tomato Planting Systems,**  
Wanzhou/Chongqing, Apr 2025



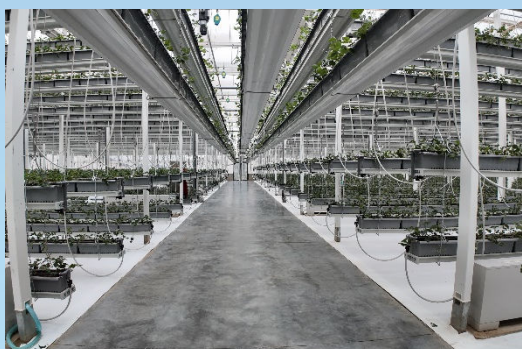
**Hanging Tomato Planting Systems,**  
Changji/Xinjiang, Mar 2025



**Blueberry Planting Systems,**  
Jinshan/Shanghai, Jan 2025



**Hanging Tomato Planting Systems,**  
Fugou/Henan, Dec 2024



**Strawberry Planting Systems,**  
Wujiaqu/Xinjiang, Oct 2024



**Hanging Tomato Planting Systems,**  
Eryuan/Dali, Jul 2024

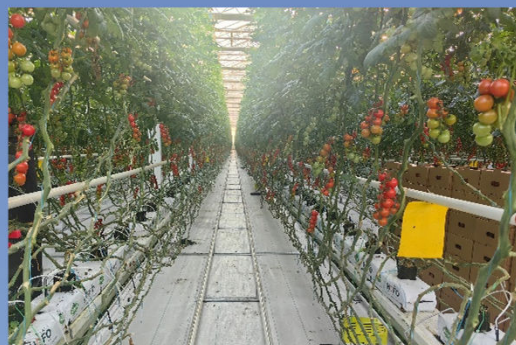


常森园艺  
CHANSCEN

## 案例展示 CASE SHOW



Hanging Tomato Planting Systems,  
Haidian/Beijing, Mar 2024



Hanging Tomato Planting Systems,  
Harqin/Chifeng, Jan 2024



Aerial Strawberry Planting  
Systems, Haidian/Beijing, Dec 2024



Supported Planting Systems,  
Jiujiang/Jiangxi, Nov 2023



Suspended Tomato Planting  
Systems, Hebi/Henan, Oct 2023



Strawberry Planting Systems,  
Changyi/Shandong, May 2023



Hanging Tomato Planting Systems,  
Luohe/Henan, Sep 2022



Double-row Cut Flower, Lanzhou  
New Area/Gansu, Sep 2022

# 常州常森园艺科技有限公司

Changzhou Chanscen Horticultural Technology Co., Ltd.

地址：江苏省常州市武进  
区嘉泽镇晨阳村58号  
电话：0519-83582906  
邮箱：info@cczcs.com  
服务热线：13358196523

Address.No. 58,Chenyang  
Village,Jiaze,Wujin,Changzhou,Jiangsu,China  
Phone.0519-83582906  
Email.info@cczcs.com  
Service Hotline.13358196523